

## ➤ Construction Details

The following are the major construction plans from the Building Committee, architect, and engineers. Details may change of course, depending on what “surprises” may be found during renovation.

- Bathrooms -
  - Enlarge and remodel, new fixtures and windows, handicapped access, changing stations.
- Ceilings -
  - Install wiring for Sanctuary, expose and refinish beams, sheetrock, new lighting, all ceiling same height.
- Walls -
  - Remove SE & NE, non-load bearing walls, remove accordion dividers, move kitchen west 8 feet, insulate and drywall exterior walls.
- Windows -
  - Glass block replaced with ones able to open (except bathrooms).
- Kitchen -
  - Expand size 300-400 sq. ft., new center island w/sinks and garbage disposals, new coffee area, install commercial dishwasher, refurbish gas oven, new electric range, refrigerator, and microwave.
- Other -
  - New electrical outlets and switches, air conditioning, new commercial grade carpeting and vinyl, encase support posts, projector screen on S wall, new speakers.

A more detailed list is available from the Building Committee.

## ➤ How Can I Help

We want you to reflect on your place in the body of our church. What has this church and your relationship with God meant to your life?

This brochure should explain what we are trying to accomplish in this Capital Stewardship Campaign. Hopefully you will be able to attend one of the many informational gatherings to get more details and ask questions.

You will receive a Commitment Card to fill out and return during our Covenant Sunday on May 16th.

## ➤ Find Out More

All of the campaign dates and contacts can be found on-line at the church's website: [www.umc-hampton.org](http://www.umc-hampton.org) under the CSC tab.

You are also welcome to talk to any of the committee members or stop by the church for more printed material.

United Methodist Church  
100 Central Ave. East  
Hampton, Iowa 50441  
641-456-4238  
[www.umc-hampton.org](http://www.umc-hampton.org)

# Capital Stewardship Campaign



### Fact Sheet:

- Campaign Theme & Goal
- Why This Campaign Now
- Plans and Pictures
- Part of an Overall Plan
- Campaign Details
- Construction Details
- How Can I Help
- Where Can I Find Out More



## ➤ Campaign Theme & Goal

The theme “*Our Foundation, Our Passion, Our Fellowship*”, builds on the success of our 2003 campaign. We added “*Our Fellowship*”, because Fellowship Hall is where we meet as a family of God. We gather here for meetings, weddings, funerals, fund raisers, meals and fellowship.

Our goal is to raise enough money to rehabilitate the Fellowship Hall and the kitchen. The detailed plan has an estimated cost of \$450,000. The money will be raised over 3 years. This campaign will peak with pledges on Covenant Sunday May 16<sup>th</sup>. We hope to start construction by early fall.

## ➤ Why This Campaign

This campaign is part of an overall plan of four phases of capital improvements to our church. The building committee has recommended that this renovation would be a logical next step. Much of the wiring needed in the sanctuary involves the Fellowship Hall ceiling.

We voted on this project during an all church meeting.

The Finance Committee decided to hire a outside consulting firm for this campaign. The great success of the last campaign would not have been possible without their help. This time the committee interviewed three firms. The firm that they felt most fit our needs and our budget was from the United Methodist Church Conference.

## ➤ Plans & Pictures



### Fellowship Hall

Replace ceiling & lighting  
Expose wooden beams  
Frame support posts  
Remove According dividers  
Replace glass block windows  
Replace flooring  
Wiring conduit for Sanctuary

### NE & SE Entrance

Remove walls to ease congestion & open up Fellowship Hall



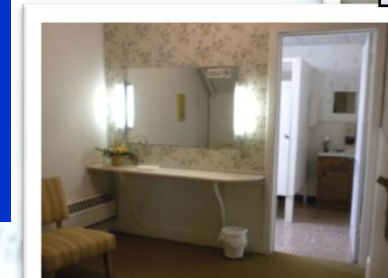
### Kitchen

Enlarge 300-400 sq.ft.  
Refurbish gas oven  
Add commercial dishwasher



### Bathrooms

Handicapped accessible  
Facelift and new fixtures  
Larger and new windows



## ➤ Part of an Overall Plan

The Building Committee plan modified from original 2003 proposal. **Completed**

### PHASE 1-Safety/Structure

1. Tuck pointing of church & parsonage
2. Repair stained glass windows in sanctuary
3. Replace sidewalk & front steps
4. Larger elevator for casket/wheelchair
5. South addition and new North entrance

### PHASE 2-Fellowship Hall & Kitchen

1. Install air conditioning
2. Renovate bathrooms to handicap access
3. Remove walls, Sanctuary wiring, windows
4. Renovate kitchen & replace wiring

### PHASE 3-Sanctuary

1. General facelift
2. Improve lighting & sound
3. Enlarge stage area in front of Altar

### PHASE 4-Parsonage & Parking Lot

1. Replace parsonage garage
2. Pave parking lot

## ➤ Campaign Details

- Preparation Phase - Jan 21 - Feb 25
- Leadership Meeting - Mar - May
- Letters & Fact sheet - Apr 12
- Campaign Kick Off - Apr 18
- Neighborhood Meetings - May 3-15
- Information Packets - May 3-15
- Prayer Vigil (Christ Chapel) - Apr 24-25
- Celebration Worship - Apr 25, May 2, 9
- Covenant Worship Service - May 16
- Follow-up Campaign - May 24 - Jun 2